

# arkular.

## C2 - Set Design

Side-by-side modules connect to create an inclusive family hub. Passive design principles have been employed throughout this design, providing energy savings and year-round comfort.

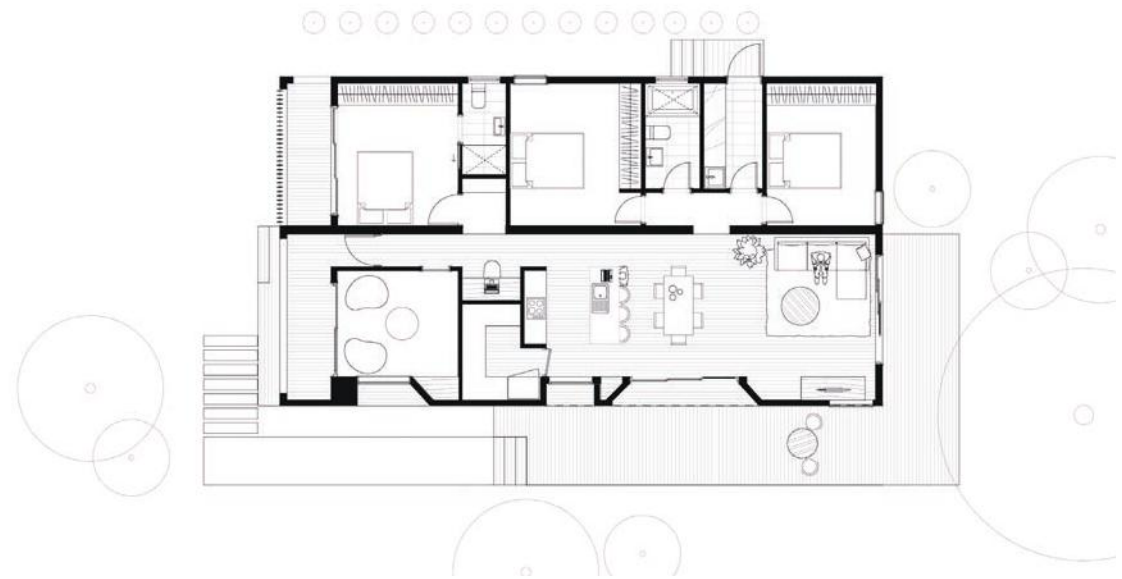
**Size:** 141 (m<sup>2</sup>)

**Dimensions:** 4.0 x 15.1  
/ 4.9 x 16.5 (m)

**Rooms:** 3 bedrooms  
2 bathrooms  
Laundry  
Kitchen  
Living area  
Dining  
Retreat

**Let's make something great together.**

\* Please contact us for price enquiries. Deck is not a Standard Inclusion. Upgrades, site works and transport costs are calculated per project. All designs are customisable, after all we are Architects.



**E** [hello@arkular.com](mailto:hello@arkular.com)  
**W** [www.arkular.com](http://www.arkular.com)